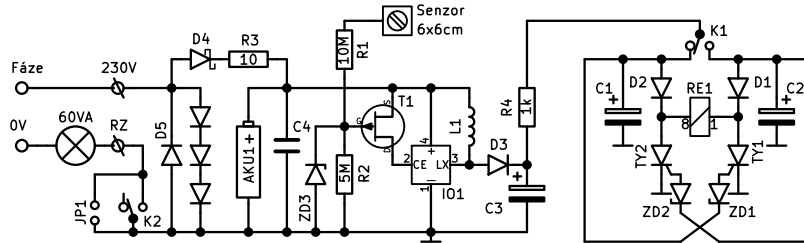


## Kapacitní bistabilní relé 230V.



IO: ANA608  
 T1: J177  
 NiMH 1,2V  
 C4: 47uH SMCC

D3: 1N4148  
 D4: 1N5819  
 D5-B: 1N4007  
 ZD3: 10V/0.5W  
 C3: 10uF/16V  
 C4: 100n

C: 47uF/16V  
 ZD: 6V2/0,5W  
 D: 1N4148  
 TY: P0102 (TS08)  
 RE: FTR-B4CB4.5Z  
 (4,5V/200R)